

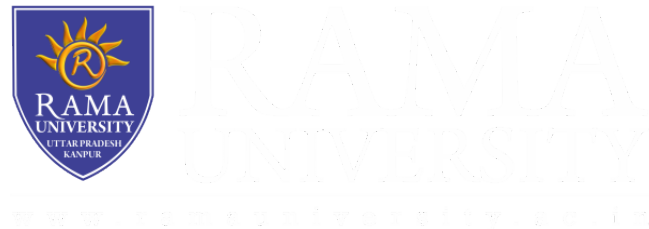


**FACULTY OF AGRICULTURE SCIENCES AND
ALLIED INDUSTRIES**

(Principles of Biotechnology)

For

M.Sc. Ag (GPB)



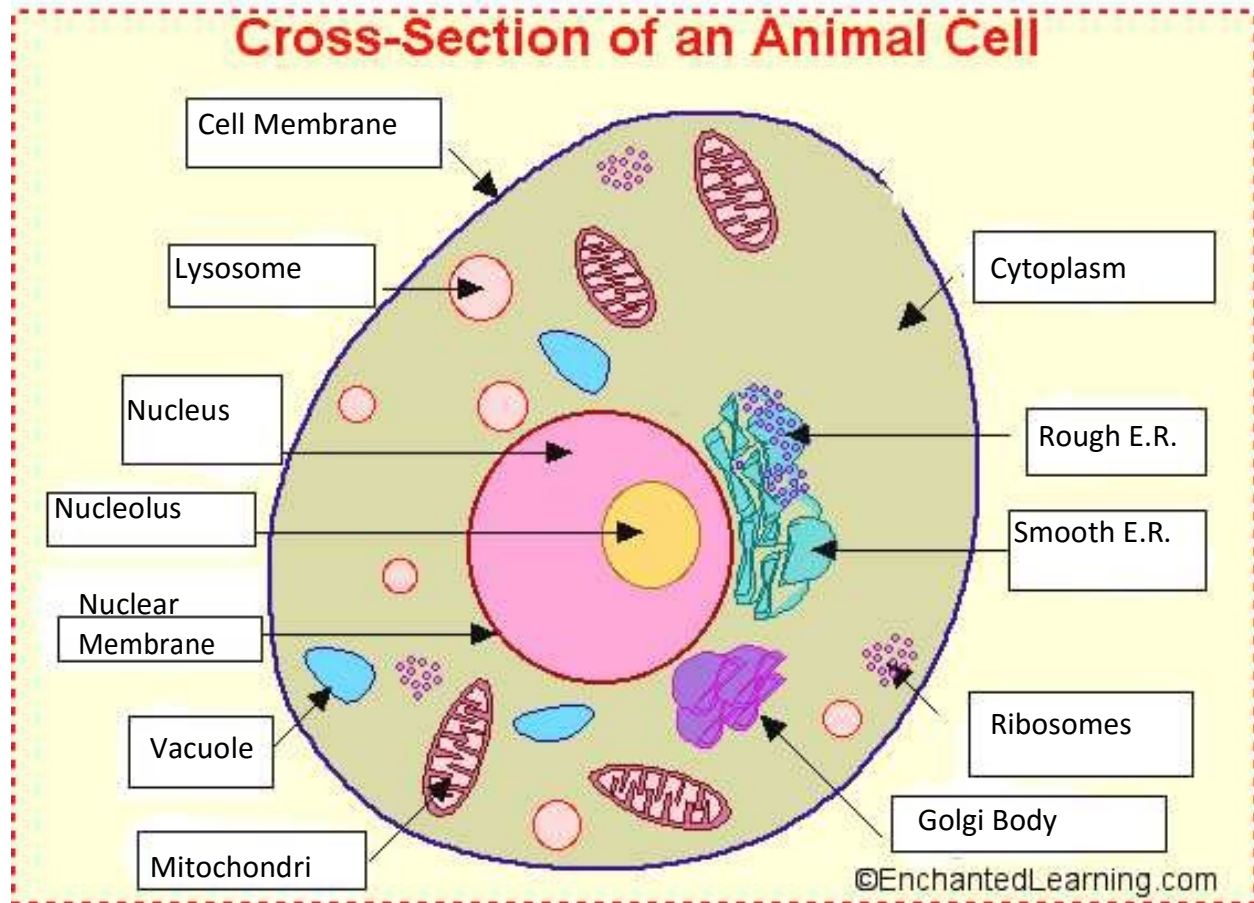
Course Instructor

Dr Shiv Prakash Shrivastav

FASAI(Genetics and Plant Breeding)

Rama University, Kanpur

PLANT AND ANIMAL CELLS



<u>Organelle</u>	<u>Function</u>
Cell Membrane	A double layer that supports and protects the cell. Allows materials in and out.
Lysosome	Contains digestive enzymes that destroy damaged organelles and invaders.
Cytoplasm	Jelly-like fluid that surrounds and protects the organelles.
Nucleus	The control center of the cell. Contains the DNA
Nuclear Membrane	Surrounds the nucleus.
Nucleolus	A round structure in the nucleus that makes ribosomes.
Vacuole	Stores food and water.
Golgi Body	Processes and packages materials for the cell.
Mitochondria	The “Powerhouse”. Breaks down food to produce energy in the form of ATP.
Rough E.R.	Builds and transports substances through the cell. Has ribosomes on it.
Smooth E.R.	Builds and transports substances through the cell. Does not have ribosomes.
Ribosome	Helps make protein for the cell.

<u>Organelle</u>	<u>Function</u>
Cell Membrane	A double layer that supports and protects the cell. Allows materials in and out.
Lysosome	Contains digestive enzymes that destroy damaged organelles and invaders.
Cytoplasm	Jelly-like fluid that surrounds and protects the organelles.
Nucleus	The control center of the cell. Contains the DNA
Nuclear Membrane	Surrounds the nucleus.
Nucleolus	A round structure in the nucleus that makes ribosomes.
Vacuole	Stores food and water.
Golgi Body	Processes and packages materials for the cell.
Mitochondria	The "Powerhouse". Breaks down food to produce energy in the form of ATP.
Rough E.R.	Builds and transports substances through the cell. Has ribosomes on it.
Smooth E.R.	Builds and transports substances through the cell. Does not have ribosomes.
Ribosome	Helps make protein for the cell.
Cell Wall	Gives shape and protection to plant cells.
Chloroplast	Changes sunlight into sugar for plant cells. Contains a green pigment called chlorophyll.

What is the difference between plant and animal cells?

Cross-Section of a Plant Cell

